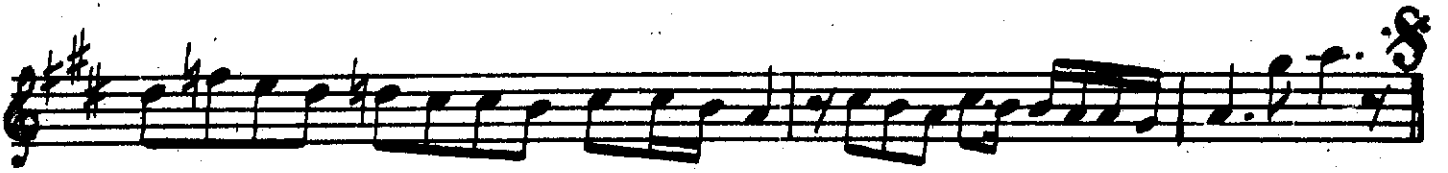


Devr-i kebir

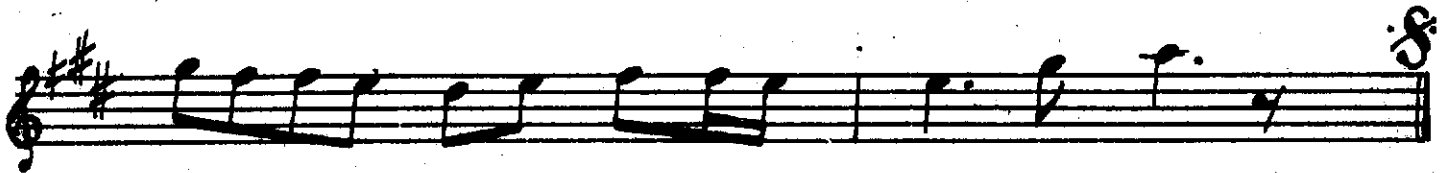
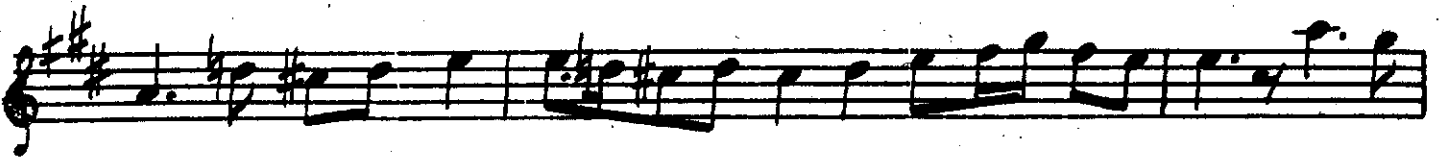
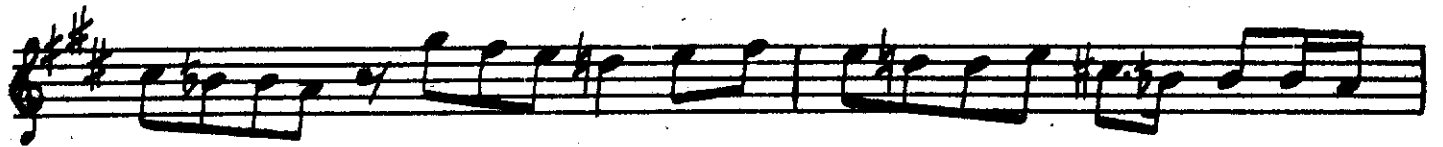
SÖZİDİL PEŞREVİ

Neyzen Emin Efendi

Musical score for 'SÖZİDİL PEŞREVİ' by Neyzen Emin Efendi. The score is written on ten staves. The first four staves are in 2/4 time, key of D major (two sharps). The fifth staff is marked 'Teslim' and changes to 3/4 time. The sixth staff is marked '2. Hane' and changes to 2/4 time. The seventh staff is marked '3. Hane.' and changes to 3/4 time. The score includes various musical notations such as notes, rests, and accidentals.



4. *Hane.*





ce men . bā . . . tū ne mi qū yem

men . mūr de ne mi şū yem . . . . . men . ha . . . .

har ne mi hā rem hey . . . . . hey . hey hey

yā ri yā ri mēn dost . . . . . dost . . . . .

yā ri yā ri men he yi hey hey he yi yār . .

pi . . . . . ri mēn in . kis . ti in . . . . .

im . kis . . . . . ti in . . . . . şı . ri nizi . . . . .

bā . ā . . . . . me de ser mes . tū nā . . . . .

lin der . . . . . be gal . . . . . der . hā ne i . . . . .

mā . ā . . . . . me de ha . ne . de rū . . . . .

hay ran . şū de . . . . . en . di . . . . . se ser . . . . .

ger dān . şū de sad . ak . lū can . . . . .

en der . . pe yeş . . bi . destubi . . . . .

pa . ā . . me de e yi mā . de ni . . . . .

ā teş . bi yā . . . . ā teş . . . . .

cū . yi . . . . zi mā val . lah ki mek . . . . .

res tū . . . . de ga . . . . in . tā kin . . . . .

cā . ā . . . . me de rū . pū . . . . sı cūn . . . . .

pu sed . tū ra . . . . ey . rū yi tū . . . . .

sem . sed . . . . du ha Ey . gūn ci hā . . . . .

ne ez . . . . ru hat cūn . deş . tū sah . . . . .

ra ā . . . . me de Ah ne da red des tū pa . . . . .

bī . . . . . aşk . . . . . o bī des tū bi . pa . . . . .

yem ah ki rū zū şebcū mec . . . . nū . . . . .

nem . . . . . se ri zen ci ri mi hā . . . . . yem

Ah hā yā lā ti he me . . . . . lem . . .

e ğer ci ā sı na da . . . . . ned ah be hun gar

kā ve vem . . . . . bil . . . . .

lāh . . . . . e ğer in rā zi bük şa . . . . . yem

## Kinci Selâm

*Eyfer.*  
Ah . . . . . geh çer . hi . . . . . ze nan . . .

nan . . . . . hem cün . fe . . . . . le kem . . . . .

ah . . . . . geh pā . . . . . ze nan . . .

nan . . . . . hem cün . me . . . . . le kem . . . . .

ah . . . . . çer ham . pey . . . . . hak

ah . . . . . rak sam . . . . . pey . . . . . hak . . .

Hak . . . men zâ . . . ni . . . ve yem . . .

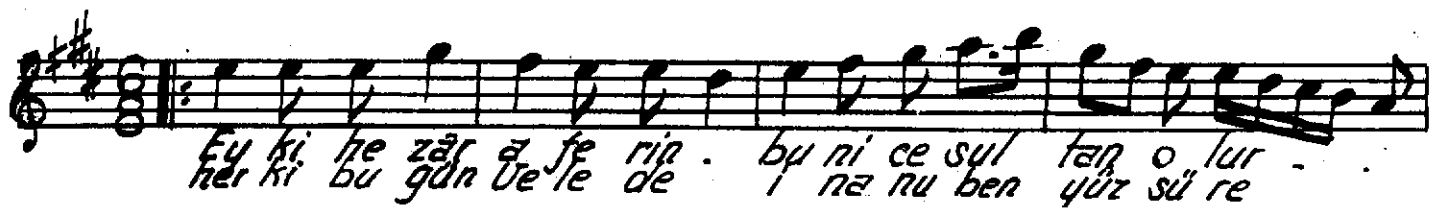
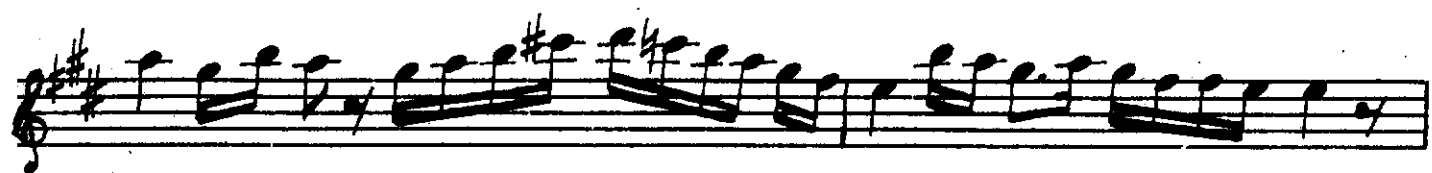
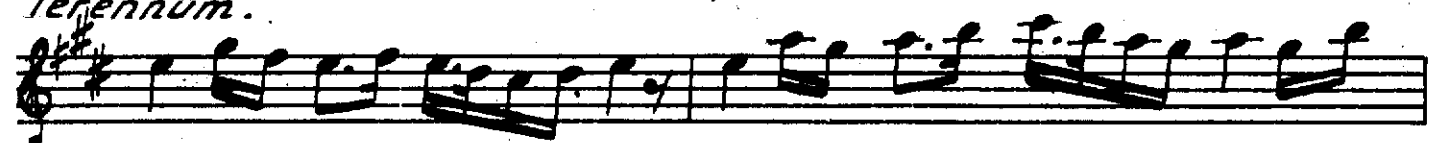
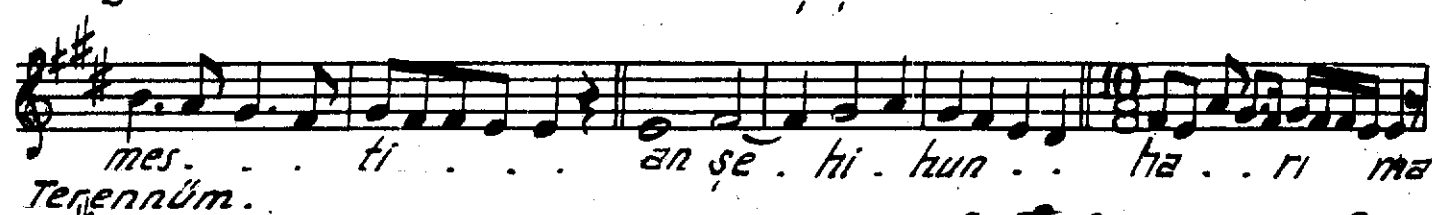
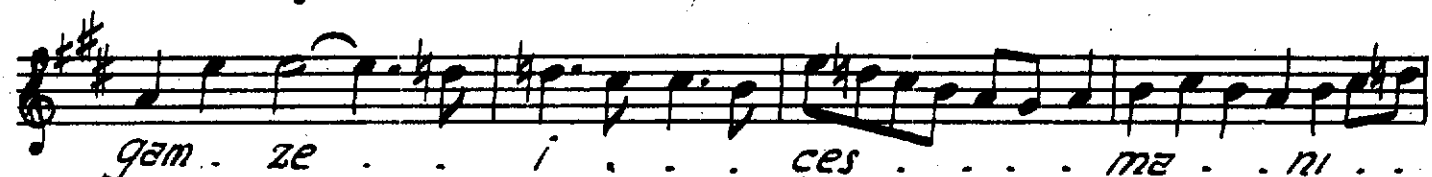
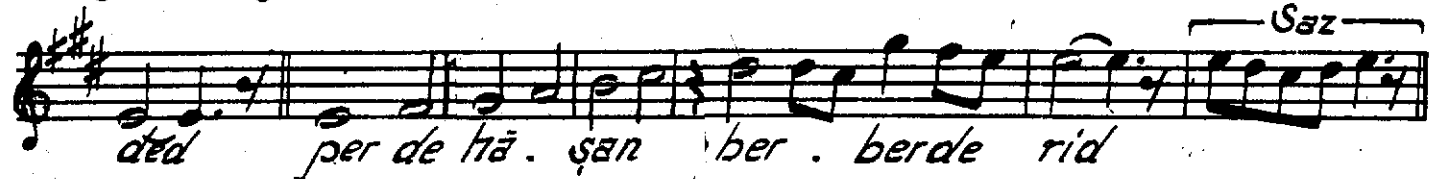
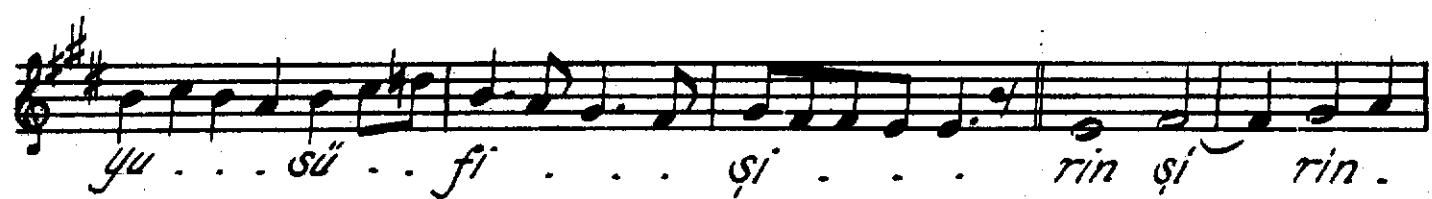
yem . . . . . ni mûs . . . te . . . . . re kem . . . . .

*Terennüm.*

*"Üçüncü Selâm"*

2/4 Per . de . . . di . . . ger . . me

zen . . . . . cûz per de i . . dîl . . da . . n





Ey ki he zâr a fe rin . bu ni ce sul tan o lur  
Her ki bu gün ve le de i na nu ben yüz sü re

Ku li o lan ki si ler . huse vü ha kan o lur  
Yok sul i se bay o lur bay i se sul tan o lur  
Terepüm.

Ser be ge ri ban dü rüst so fi i es ta ri ta ta ri ta

Ta ci be ra red zi gayb a ki be ti ka ri ta

Ba di be hâk a me de a bi ber a teş ze de

ba di be hâk a me de a bi ber a teş ze de

ask be hem ber ze de hay me i in cā re ra  
Terepüm.

Ba de hin an ya ri ka det ha re ra ya ri tû rûs

rû yi se ker pâre ra ha mû şî kûn güft ki in

â le mest terk kûn in â le mi gad de re ra

ah gü ze lin aş ki na ha lâ ti na yandı yü rek

aşk . ha ra ra ti na and i ce yim gayrı gü zel

sev me yim ten ri ye vü Ten ri nin â yâ ti na

yâr yâr yar yü re ğim yâr dost . dost . .

gör ki ne ler vâ r yâr yü re ğim del ci ğe rim

gör ki ne ler vâ r . . . yâ re ha ber vâ r

Terennüm.

Ey

ka şî fi es ra rı hu da Mev lâ . . na . . yâr . .

yâr . . yâ ri yâ ri men sul ta nı fe na şa hı be ka

Mev lā na . . . yār . . . yār . . . yā ri yā ri men Aşk

it mededir hazretine böyle hi tâb . . . yār . . . yār . .

yā ri yā ri men Nevlā yı gürü hi ev lî yā Nevlā na

yār . . . yār . . . yā ri yā ri men .

Fyfer. (Dördüncü Selâm)  
Ah . . . sul tâ . . . ni . . . . . meni . . . . .

ni . . . . . sul tâ . . . ni . . . . . meni . . . . .

ah . . . . . en der . . . di . . . . . lü can . . . . .

can . . . . . i ma . . . ni . . . . . meni . . . . .

ah . . . . . der men . bi . . . . . demi . . . . .

ah . . . . . men zin . . . de . . . . . se vem . . . . .

vem . . . . . yek can . . . . . ci . . . . . se ved . . . . .

ved . . . . . sad ca . . . ni . . . . . me ni . . . . .

*Son Pesrev.*

*Derviş Yekta*



*Son Yürük*

